

Item No.: 13013001

Solar Roof and Ground Mounting Structure -Angle adjustable

➤ Design criterion

Basic Wind Pressure: 0.5-0.8 KN/m²

Panel size: 1650x992 mm 1xN Portrait (N number of panels)

Covered area : 1.6X2.1 M²

➤ Product Introduction

Product Material: 6063-T5 Aluminum alloy
(Anodized with thickness>10um)

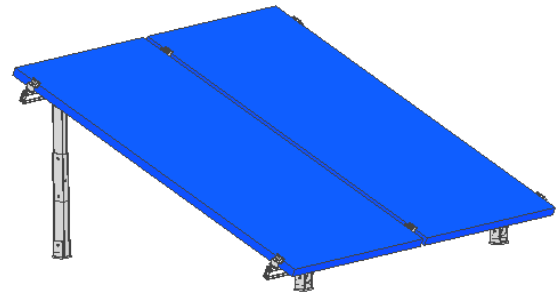
Fastener Material: Stainless steel (SS304)

Adjustable angle: 19~36degree

The distance from lowest point of panel to ground:

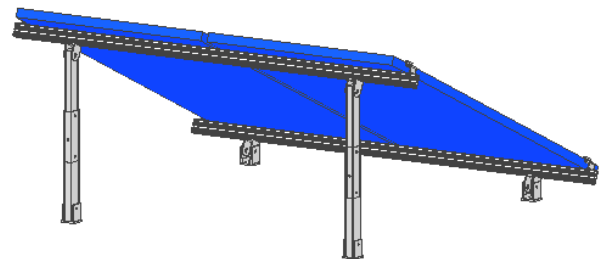
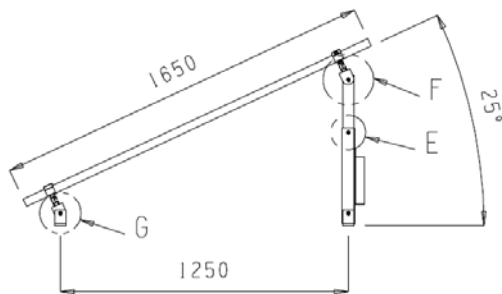
100↔500 mm

Wind load: 30m/s~55m/s



➤ Product Characteristic

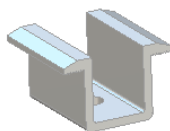
- With strength, resistant corrosion
- ✧ Apply to flat roof and tin roof.
- ✧ Foundation bolt is pre-installed in the cement base, roof mounting structure can be fixed by expansion bolt.
- ✧ With distance from rooftop to the lowest point of panel



➤ Components



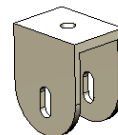
Fastener-outside



upper clamp



end clamp



fastener-inside

Room 1005, No. 939 JinQiao Road, Pudong, Shanghai China 200136

Tel: 61600231, 61600232, 61600233

Email: christina.rao@frontierack.com

www.frontierack.com